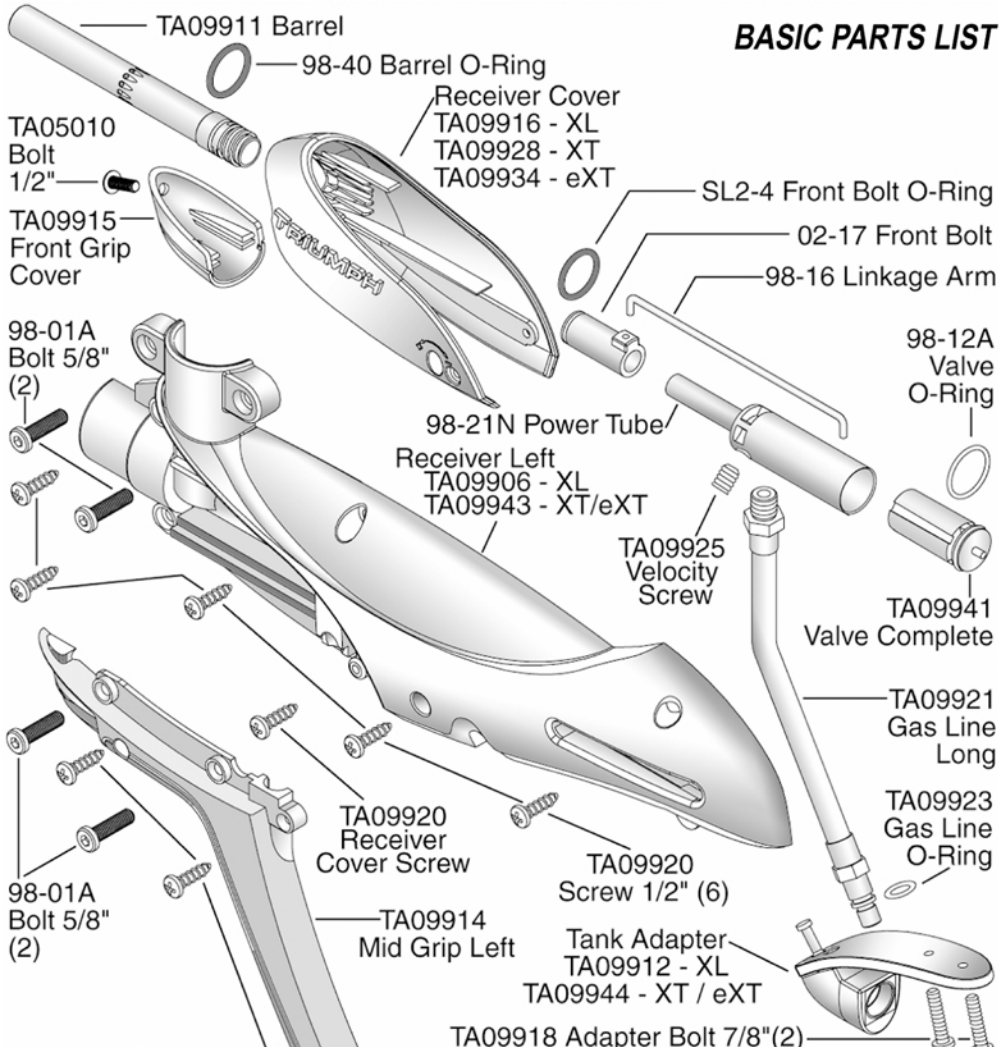


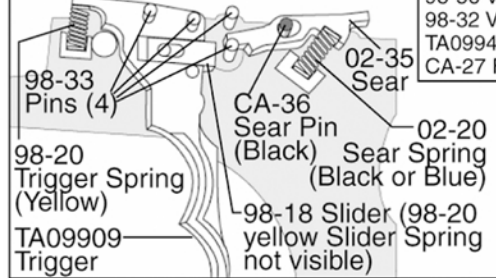
BASIC PARTS LIST



Valve Disassembly Not Recommended
INTERNAL VALVE PARTS:

- 98-25N Valve Body
- SL2-25 Valve Seat O-Ring (2)
- PA-31A Valve Snap Ring
- 98-56 Valve Plug
- 98-32 Valve Spring
- TA09940 Valve Plunger
- CA-27 Front Valve Seat

TRIGGER ASSEMBLY



- 1) Place 4 dowel pins and 1 black sear pin into locations as shown.
- 2) Then place the trigger and sear onto pins as shown.
- 3) Insert sear spring (black or blue) as shown.
- 4) Insert trigger spring (yellow) as shown.

WARNING

DO NOT DISASSEMBLE THIS MARKER WHILE IT IS PRESSURIZED WITH AIR. DO NOT PRESSURIZE A PARTIALLY ASSEMBLED MARKER.

